



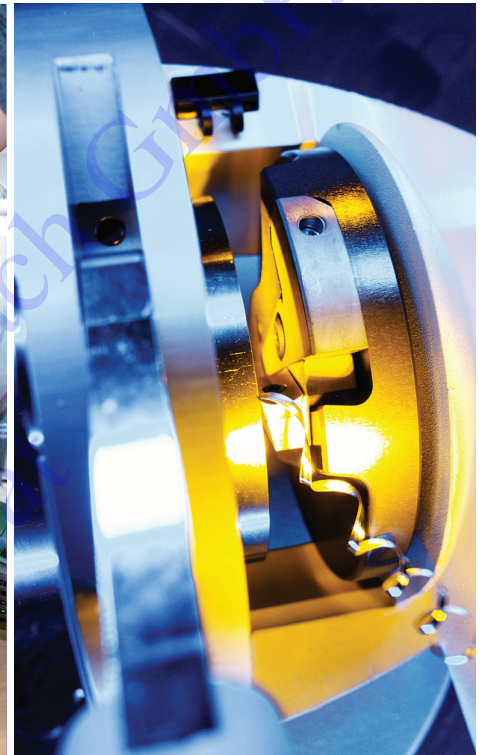
RPG 4.5, RPG 4.5 S, RPG 8.6

Tube squaring machines

In manual welding technology, quality pipe end processing is absolutely essential from an economic perspective. A high quality of pipe-end machining is absolutely required from a technical viewpoint in automated welding, the so-called "orbital welding". Orbitalum has developed the squaring tube machines RPG 4.5, RPG 4.5 S and RPG 8.6. The perfect solution for the demanding, quality preparation of pipe ends for orbital welding!



Designed for burr-free squaring of thin-walled stainless steel tubes



With high-precision, the user is able to prepare tubes with the RPG 4.5 up to 114.4 mm (4.5") and with the RPG 8.6 up to 219.1 mm (8.6") tube outer diameters quickly, burr-free and absolutely square.

Low operating costs for processing tubes are a big advantage. Our symmetric, exchangeable stainless steel and aluminum clamping shells (not for RPG 4.5 S) allow for a quick and easy tool change without any tool. A dimension change no longer requires a lot of time. The operator can work comfortably thanks to the ergonomic design of the machine, and can also save time.

All multifunctional tools (MFW) are two-sided tool bits with protective coating against tool wear. This enables the preparation of tubes made of high-alloy, unalloyed and low-alloy steels and aluminum with high precision very quickly and efficiently.

Clean and secure working area with a clear view of the cutting head.

The RPG 4.5 (S) and RPG 8.6 are equipped with a high-quality, powerful drive with 230 Volt and/or 120 Volt.

The machines and accessories are supplied in a handy, durable storage and shipping case.

- Squaring tube ends with a high-quality finish
- Burr-free and square
- Beveling possible with a special tool holder (not with RPG 4.5 S)
- Quick clamping system for tools, clamping shells and tubes
- Preparation of thin-walled stainless steel tubes (V4A)
- High-performance coated tool bit with two cutting edges
- Built-in electronic speed regulation

- Micrometer feed for optimum results
- Space saving, light weight and portable machine for a mobile and secure application
- Machine with rotating/removable bench stand

ADDITIONAL FEATURES OF THE RPG 4.5 S:

The tube squaring machine RPG 4.5 S is characterized by its universal vice-clamping system. With this particularly economical alternative to other conventional dimension-specific clamping shells, tubes can be centered, clamped and processed in the easiest way possible.



SCHWEISSTECHNIK LAMBACH

GmbH

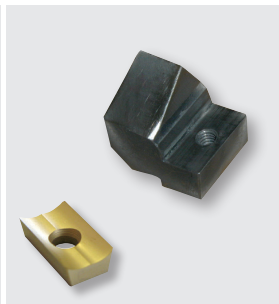
Schweiss-, Schneid-, und Wärmetechnik - Spezialwerkstätte und Gaselager



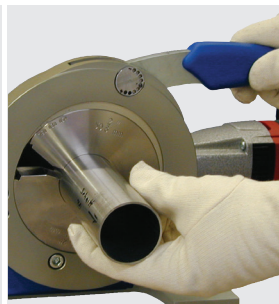
Including durable storage and shipping case



Wide range of stainless steel clamping shells



Including tool holder WH and multifunctional tool MFW



Quick clamping system for tools, clamping shells and tubes



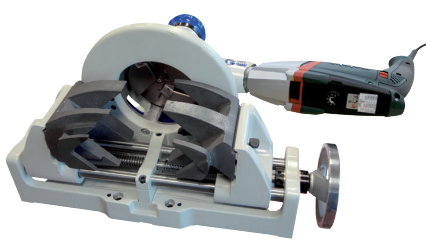
Application area: Process plant builders for the high-purity gas, electronic, pharmaceutical, food, beverage, solar as well as the chemical industry

APPLICATION RANGE		RPG 4.5	RPG 4.5 S	RPG 8.6
Tube OD	[mm]	12.7 - 114.3	12.7 - 114.3	50.8 - 219.1
	[inch]	0.5 - 4.5	0.5 - 4.5	2 - 8.6
Wall thickness max.	[mm]	3.0	3.0	3.6
	[inch]	0.118	0.118	0.142
Tube materials		High-alloy steels, unalloyed and low-alloy steels and aluminum. Others on request.		
TECHNICAL DATA		RPG 4.5	RPG 4.5 S	RPG 8.6
Dimensions (including motor)	[mm]	460 x 260 x 230	610 x 380 x 270	500 x 350 x 350
	[inch]	18.1 x 10.2 x 9.1	24 x 15 x 10.6	19.7 x 13.8 x 13.8
Power	[W]	1100	1100	1100
Protection class	[class]	II	II	II
Speed (max. idling speed)	[min ⁻¹]	8 - 52	8 - 52	7 - 18
Vibration level (EN 60745)	[m/s ²]	< 2.5	< 2.5	< 2.5
Noise level at the workplace (EN 23741)	[dB (A)]	Idle running approx. 83	Idle running approx. 83	Idle running approx. 83
SCOPE OF DELIVERY		RPG 4.5	RPG 4.5 S	RPG 8.6
Tube squaring machine	Pc.	1	1	1
Durable storage and shipping case	Pc.	1	1	1
Tool holder WH (Code 790 038 320)	Pc.	1	1	1
Multifunctional tool MFW (Code 790 038 314)	Pc.	1	1	1
Tool set	Set	1	1	1
Operating instructions and spare parts list	Set	1	1	1

The technical data are not binding. They are not warranted characteristics and are subject to change. Please consult our general conditions of supply.



RPG 4.5



RPG 4.5 S



RPG 8.6